

# CANCER CARE CLOSE TO HOME

*RMC is here for you*

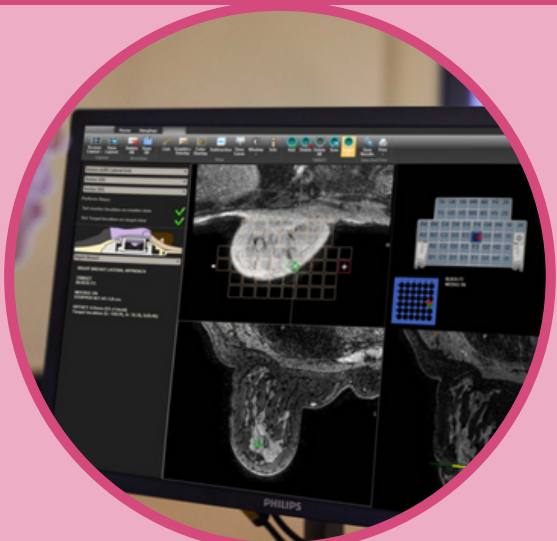


## Primary Care

With family physician offices in Jacksonville, Oxford, and Anniston you can receive care from pediatrics through adulthood.

## OB/GYN

Choose from our team of physicians who all offer outstanding care for women's health.



## IMAGING

No matter if you're in need of a routine mammogram or diagnostic breast MRI, you won't have to travel far for your visit.

## RADIATION ONCOLOGY

With UAB Radiation Oncology at RMC you'll get quality care close to home.



## SURGERY

World class surgical options with the latest technology in minimally invasive surgery.

*Visit*  
**RMCCARES.ORG**  
*today*

# SUPPORT

*Close to home*



## STEEL MAGNOLIAS SUPPORT GROUP

### Group Meetings

Steel Magnolias meet on the 4th Tuesday of each Month (except July, Nov. & Dec.) at 5:00 on the 1st floor Private Dining room of RMC.

### PINKS Boutique

We stock Mastectomy Bras, Breast Prosthesis, Wigs, Hats and Scarves at NO cost to cancer patients.

### Care Packages

Included are recovery, inspirational, and educational items that are provided to breast cancer patients on day of surgery at RMC. Also upon request, packages are mailed in and out of state.

### Dining Vouchers

Two meals in the RMC cafeteria are provided for family members of cancer patients having surgery.

### Snacks

Provided in the following: RMC Radiation Oncology, RMC Chemo and Clearview Chemo departments.

### Breast Cancer Awareness Program

Available to girls in grades 9-12 to be taught at local schools by a trained volunteer under the supervision of a school Nurse.

## *Contact*

901 Leighton Avenue, Suite 407  
Anniston, Alabama 36207 (256) 231-8827  
[support@steelmagnoliasinc.org](mailto:support@steelmagnoliasinc.org)